

**PRELIMINARY
NOT FOR CONSTRUCTION**

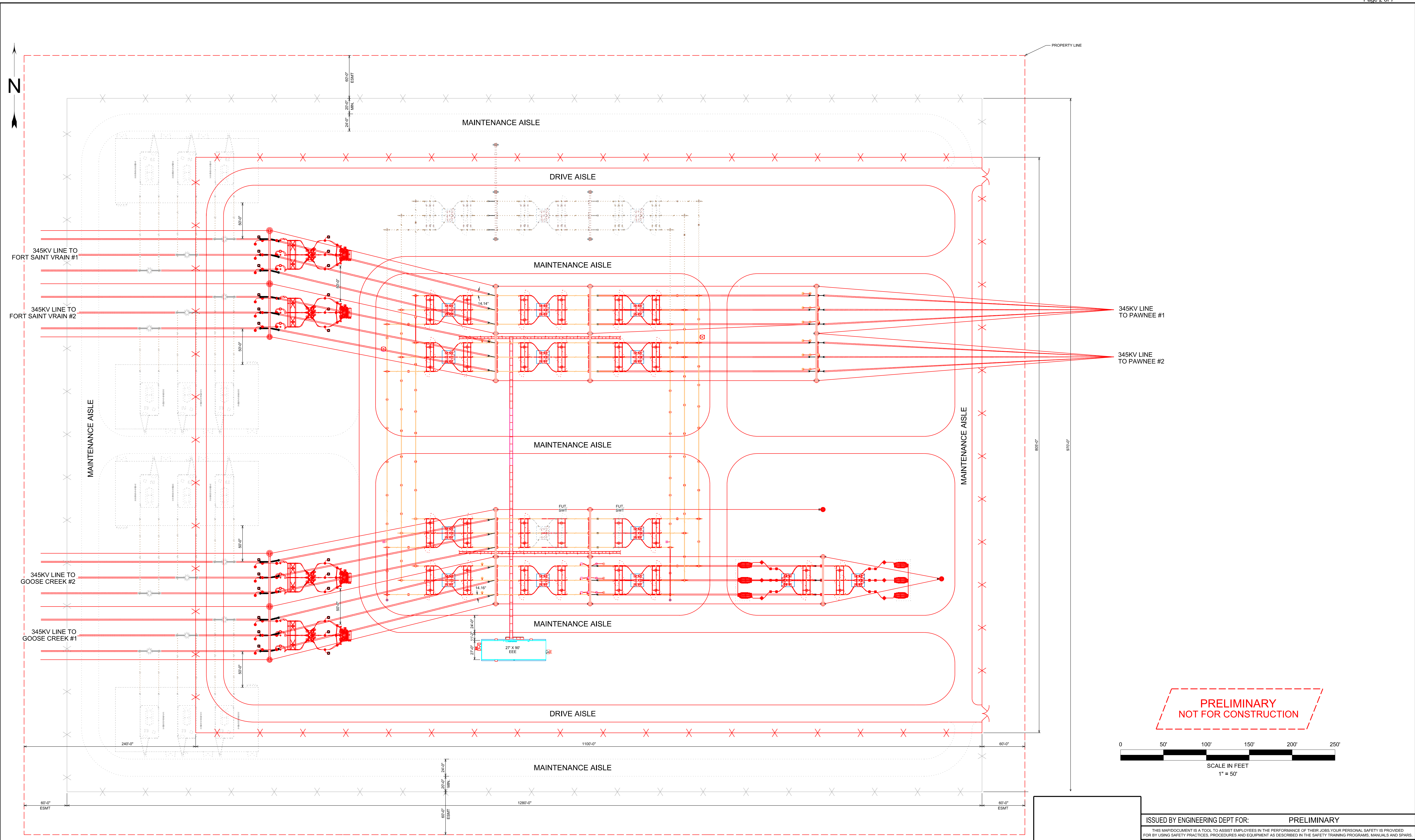
REV	DATE	WBS 4	REVISION DESCRIPTION	REV	DATE	WBS 4	REVISION DESCRIPTION	REV	DATE	WBS 4	REVISION DESCRIPTION
0	2021/01/22	-	-	0	2021/01/22	-	PRELIMINARY - FORT SAINT VRAIN - 345KV ERP	0	-	-	-
1	2021/02/24	-	-	1	2021/02/24	-	PRELIMINARY - UPDATED STATION NAMES	1	-	-	-

ISSUED BY ENGINEERING DEPT FOR: **PRELIMINARY**
 THIS MAP/DRAWING IS A TOOL TO ASSIST EMPLOYEES IN THE PERFORMANCE OF THEIR JOBS. YOUR PERSONAL SAFETY IS PROVIDED FOR BY USING SAFETY PRACTICES, PROCEDURES AND EQUIPMENT AS DESCRIBED IN THE SAFETY TRAINING PROGRAMS, MANUALS AND SPARS.
 INTERNAL INFORMATION: DO NOT COPY OR DISTRIBUTE WITHOUT EXPRESS WRITTEN CONSENT FROM XCEL ENERGY

FORT SAINT VRAIN SWITCHYARD **FSVR**
345KV SUBSTATION
GENERAL ARRANGEMENT

Xcel Energy FORT SAINT VRAIN - ERP EXPANSION-GA SCALE 1"=60'-0" REV 1

07/3-001.000301.DWG 2/24/2021 7:05:47 PM



**PRELIMINARY
NOT FOR CONSTRUCTION**

SCALE IN FEET
1" = 60'

GENERAL ARRANGEMENT
 SCALE: 1" = 60'-0"

REV	DATE	WBS 4	REVISION DESCRIPTION	REV	DATE	WBS 4	REVISION DESCRIPTION	REV	DATE	WBS 4	REVISION DESCRIPTION
0	2021/01/21	-	PRELIMINARY - PAWNEE WEST - 345KV ERP	1	2021/02/24	-	PRELIMINARY - UPDATED STATION NAMES				

ISSUED BY ENGINEERING DEPT FOR: **PRELIMINARY**

THIS MAP/DRAWING IS A TOOL TO ASSIST EMPLOYEES IN THE PERFORMANCE OF THEIR JOBS. YOUR PERSONAL SAFETY IS PROVIDED FOR BY USING SAFETY PRACTICES, PROCEDURES AND EQUIPMENT AS DESCRIBED IN THE SAFETY TRAINING PROGRAMS, MANUALS AND SPARS.
 INTERNAL INFORMATION: DO NOT COPY OR DISTRIBUTE WITHOUT EXPRESS WRITTEN CONSENT FROM XCEL ENERGY

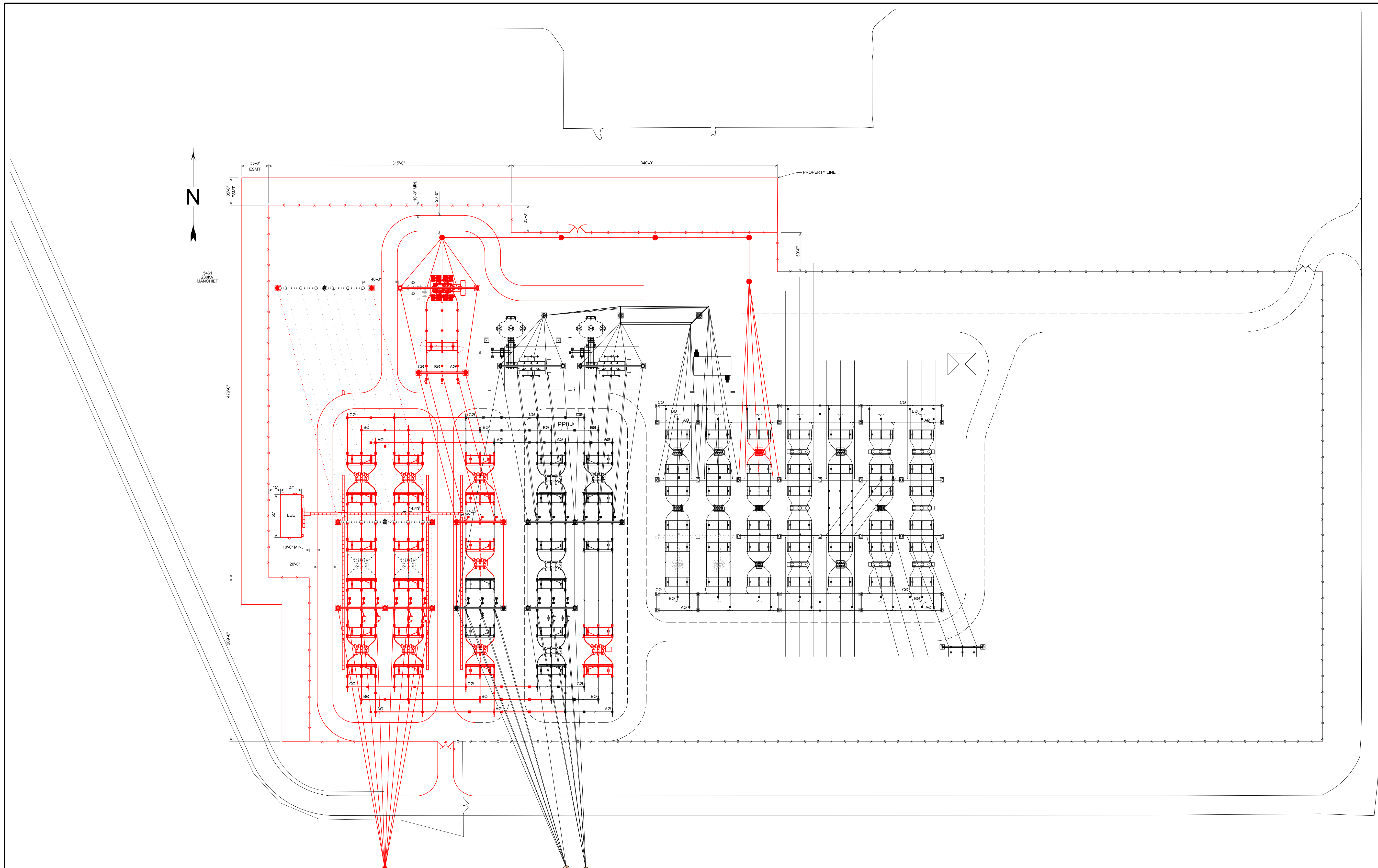
CANAL CROSSING
 ULTIMATE ARRANGEMENT
 345KV PLAN

CANAL CROSSING - ERP EXPANSION-GA

SCALE: 1" = 60'-0" REV: 1

2/24/2021 8:08:28 PM

CANAL CROSSING-001.001.S01.DWG



**PRELIMINARY
NOT FOR CONSTRUCTION**

REV	DATE	WBS 4	REVISION DESCRIPTION	REV	DATE	WBS 4	REVISION DESCRIPTION	REV	DATE	WBS 4	REVISION DESCRIPTION
0	202102/24	-	PRELIMINARY - PAWNEE - 345KV ERP	1	212002/24	-	PRELIMINARY - UPDATED STATION NAMES				

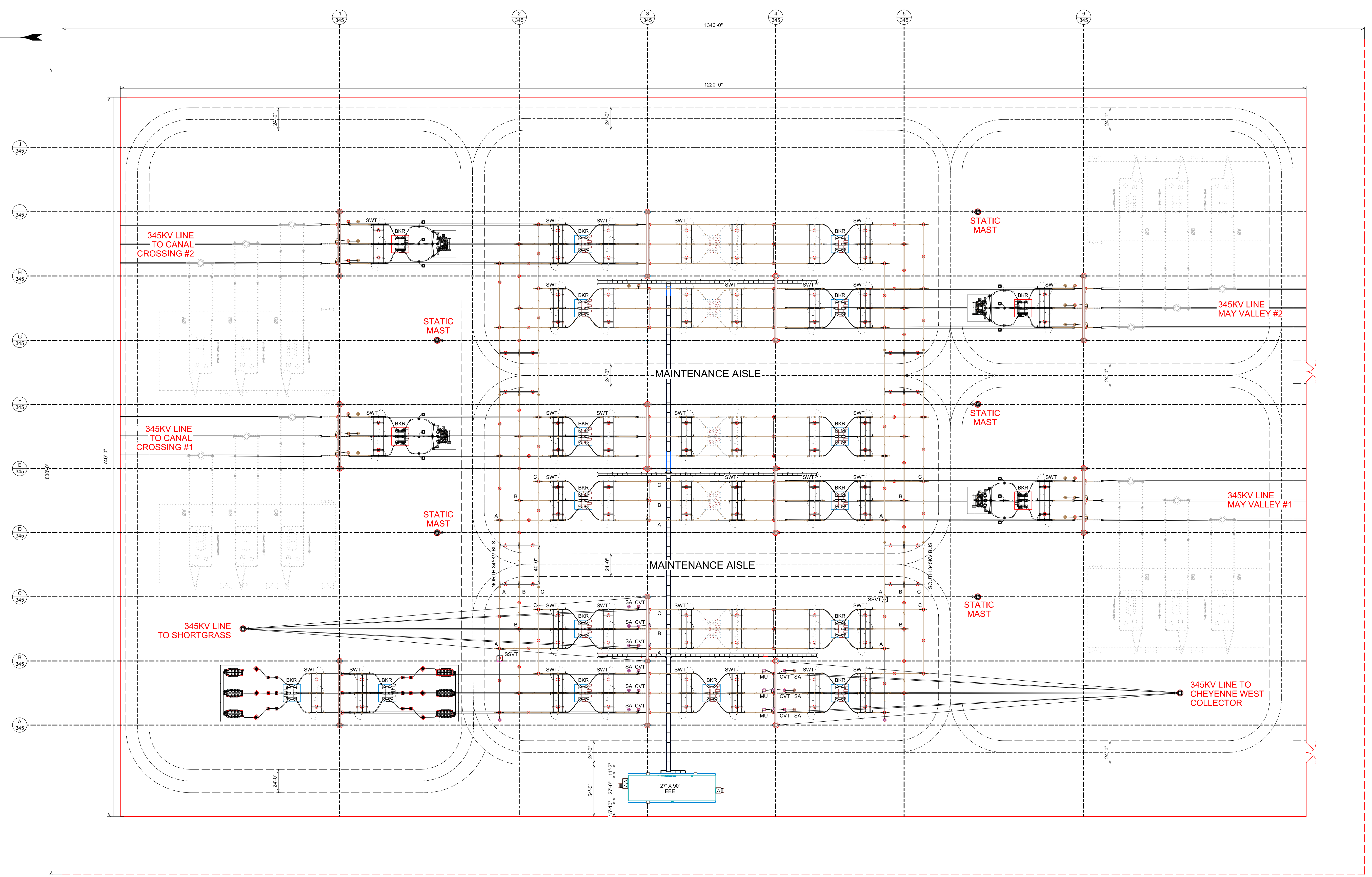
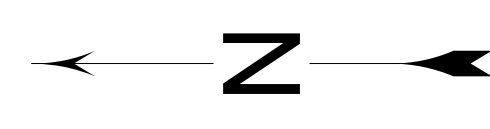
ISSUED BY ENGINEERING DEPT FOR:
 THIS MAP/DRAWING IS A TOOL TO ASSIST EMPLOYEES IN THE PERFORMANCE OF THEIR JOBS. YOUR PERSONAL SAFETY IS PROVIDED FOR BY USING SAFETY PRACTICES, PROCEDURES AND EQUIPMENT AS DESCRIBED IN THE SAFETY TRAINING PROGRAMS, MANUALS AND SPARS.
 INTERNAL INFORMATION: DO NOT COPY OR DISTRIBUTE WITHOUT EXPRESS WRITTEN CONSENT FROM XCEL ENERGY

**PAWNEE 345KV
 GENERAL ARRANGEMENT
 345KV YARD**

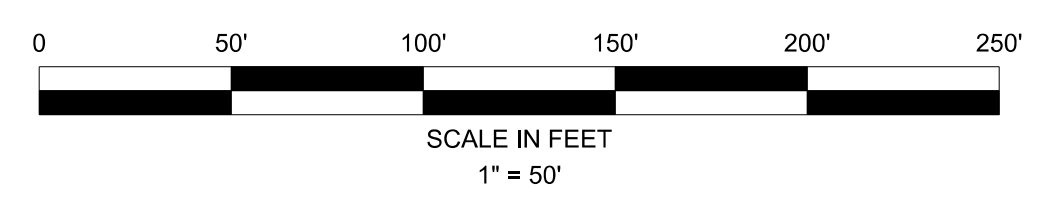
PAWN

PAWNEE - 345KV ERP EXPANSION - GA SCALE: 1"=60'-0" REV: 1

0929-001.001501 VERSION C.DWG 2/24/2021 11:43:51 AM



GENERAL ARRANGEMENT
 SCALE: 1" = 50'-0"



**PRELIMINARY
 NOT FOR CONSTRUCTION**

REV	DATE	WBS 4	REVISION DESCRIPTION	REV	DATE	WBS 4	REVISION DESCRIPTION
0	2021/01/22		PRELIMINARY - CHEYENNE RIDGE 345KV ERP				
1	2021/02/24		PRELIMINARY - UPDATED STATION NAMES				

ISSUED BY ENGINEERING DEPT FOR: **PRELIMINARY**

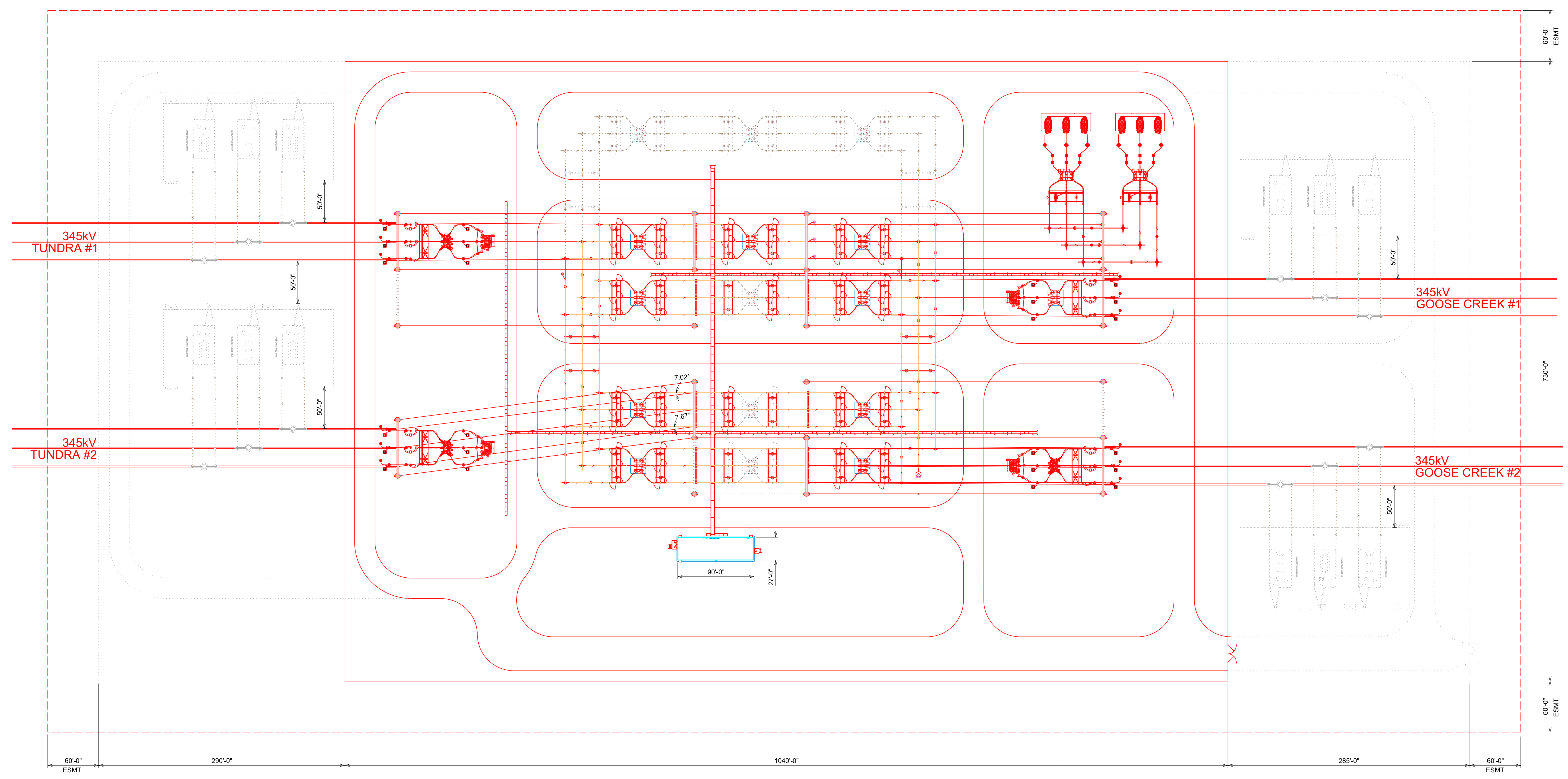
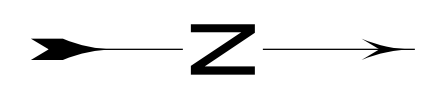
THIS MAP/DOCUMENT IS A TOOL TO ASSIST EMPLOYEES IN THE PERFORMANCE OF THEIR JOBS. YOUR PERSONAL SAFETY IS PROVIDED FOR BY USING SAFETY PRACTICES, PROCEDURES AND EQUIPMENT AS DESCRIBED IN THE SAFETY TRAINING PROGRAMS, MANUALS AND SPARS.
 INTERNAL INFORMATION: DO NOT COPY OR DISTRIBUTE WITHOUT EXPRESS WRITTEN CONSENT FROM XCEL ENERGY

**GOOSE CREEK
 ULTIMATE ARRANGEMENT
 345KV PLAN**

GOOSE CREEK- ERP EXPANSION-GA SCALE: 1"=50'-0" REV: 1

2/24/2021 2:52:07 PM

CHYE-001.001.S01.DWG

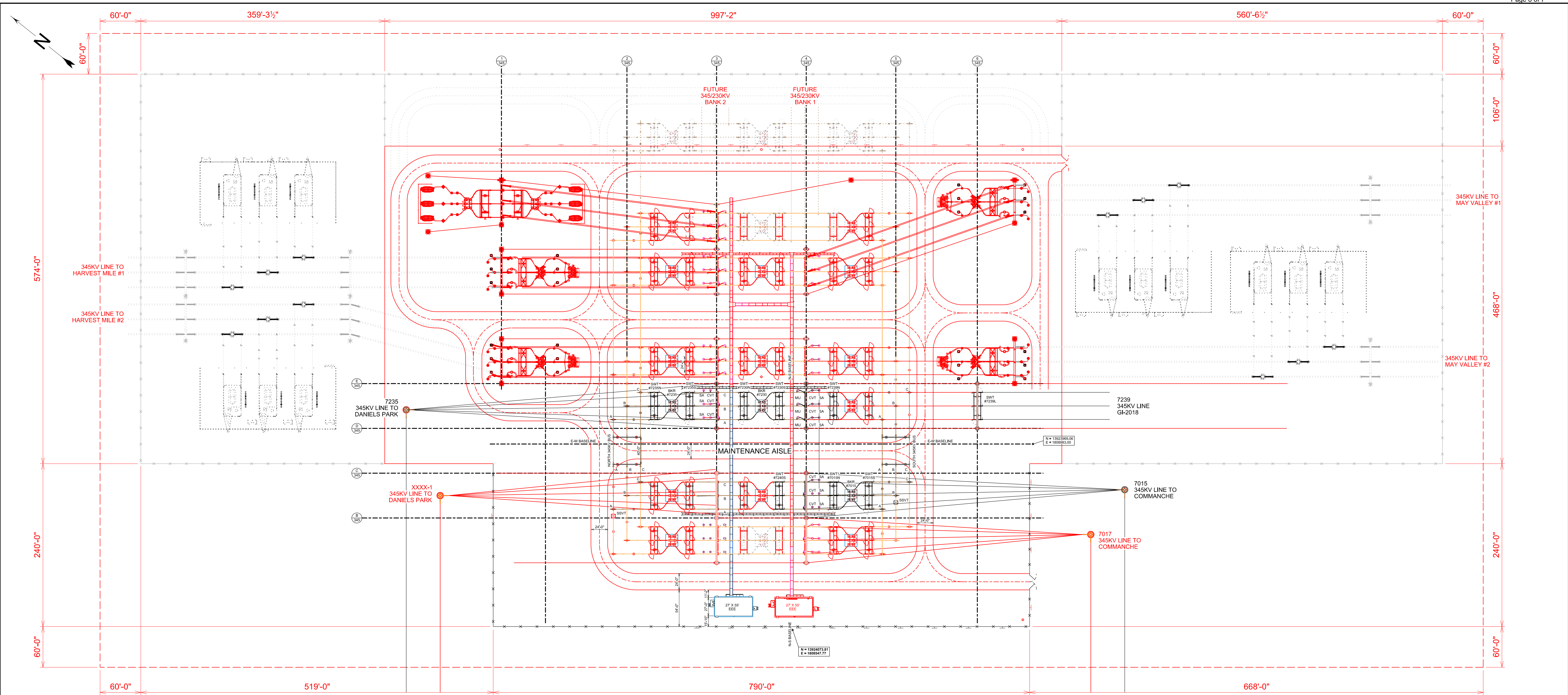


**PRELIMINARY
NOT FOR CONSTRUCTION**

ISSUED BY ENGINEERING DEPT FOR:		PRELIMINARY	
THIS MAP/DOCUMENT IS A TOOL TO ASSIST EMPLOYEES IN THE PERFORMANCE OF THEIR JOBS. YOUR PERSONAL SAFETY IS PROVIDED FOR BY USING SAFETY PRACTICES, PROCEDURES AND EQUIPMENT AS DESCRIBED IN THE SAFETY TRAINING PROGRAMS, MANUALS AND SPARS.			
INTERNAL INFORMATION: DO NOT COPY OR DISTRIBUTE WITHOUT EXPRESS WRITTEN CONSENT FROM XCEL ENERGY			
MAY VALLEY 345KV GENERAL ARRANGEMENT 345KV YARD		SCALE 1"=60'-0"	REV 1
MAY VALLEY - 345KV ERP EXPANSION - GA			

REV	DATE	WBS 4	REVISION DESCRIPTION	REV	DATE	WBS 4	REVISION DESCRIPTION	REV	DATE	WBS 4	REVISION DESCRIPTION
0	20210122	-	PRELIMINARY - LAMAR - 345KV ERP	0	20210224	-	PRELIMINARY-UPDATED STATION NAMES				

345KV ERP EXPANSION.DWG 2/24/2021 12:37:43 PM



GENERAL ARRANGEMENT
 SCALE: 1" = 70'-0"

LEGEND
 • SURVEY BENCHMARK

GENERAL NOTES
 1. COORDINATE SYSTEM = UTM83-13F

PRELIMINARY
 NOT FOR CONSTRUCTION

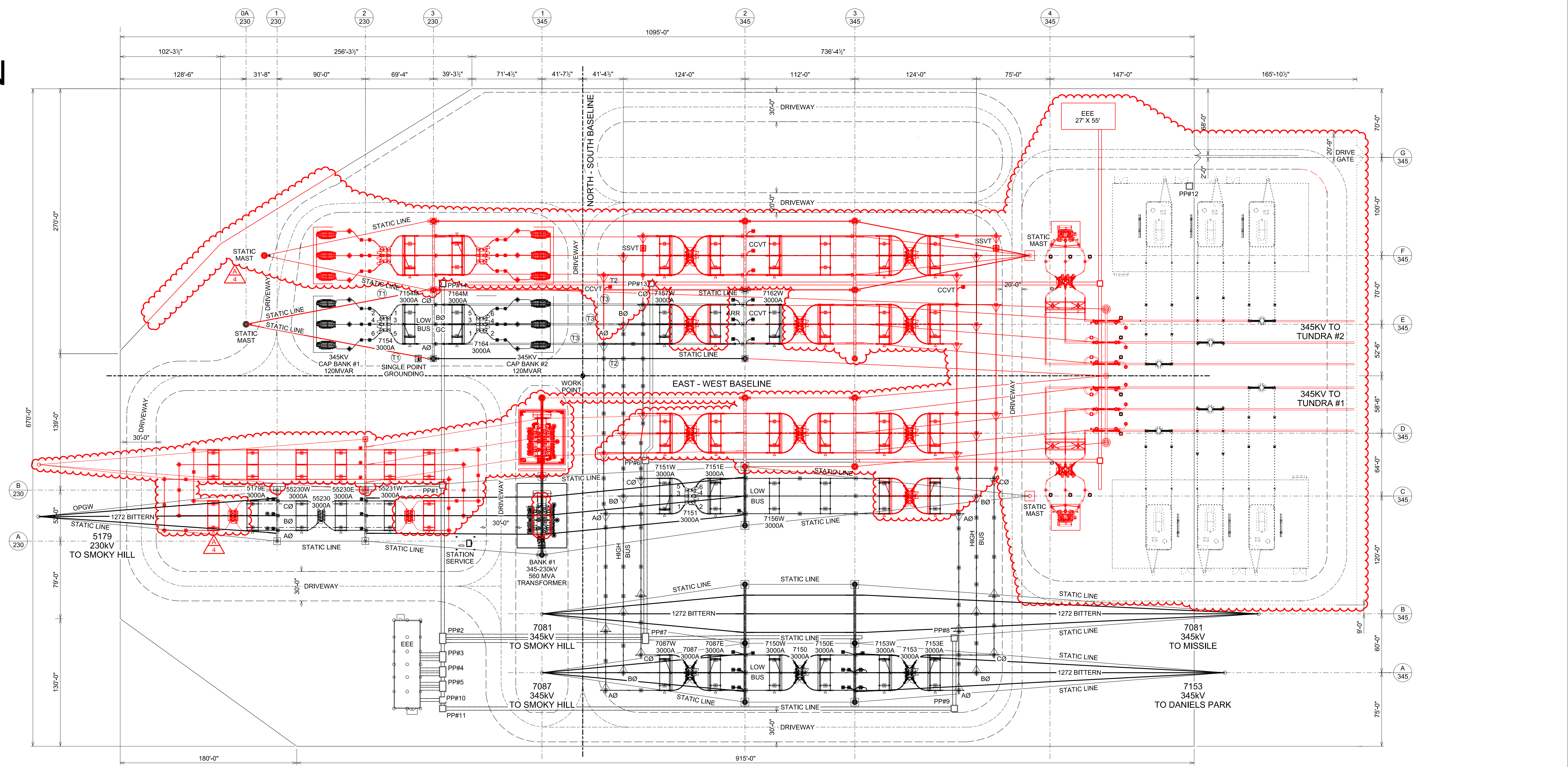
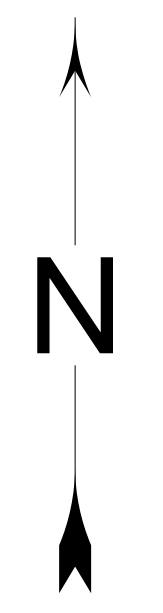
REV	DATE	WBS 4	REVISION DESCRIPTION	REV	DATE	WBS 4	REVISION DESCRIPTION	REV	DATE	WBS 4	REVISION DESCRIPTION
0	2021/12/21			0	2021/12/21		PRELIMINARY - TUNDRA 345KV ERP	0			
1	2021/02/24			1	2021/02/24		PRELIMINARY - UPDATED STATION NAMES	1			

ISSUED BY ENGINEERING DEPT FOR: PRELIMINARY

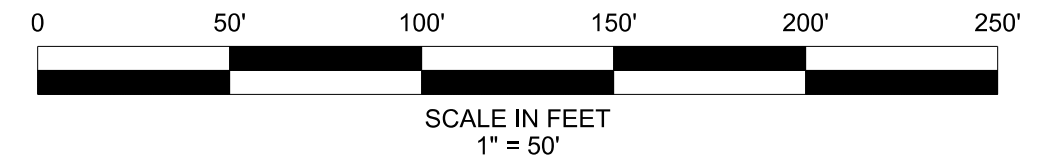
THIS MAP/DOCUMENT IS A TOOL TO ASSIST EMPLOYEES IN THE PERFORMANCE OF THEIR JOBS. YOUR PERSONAL SAFETY IS PROVIDED FOR BY USING SAFETY PRACTICES, PROCEDURES AND EQUIPMENT AS DESCRIBED IN THE SAFETY TRAINING PROGRAMS, MANUALS AND SPARS.
 INTERNAL INFORMATION: DO NOT COPY OR DISTRIBUTE WITHOUT EXPRESS WRITTEN CONSENT FROM XCEL ENERGY

TUNDRA SUBSTATION TUND
 GENERAL ARRANGEMENT
 345KV PLAN

Xcel Energy TUNDRA - ERP EXPANSION-GA SCALE 1"=70'-0" REV 1
 2/24/2021 7:21:05 PM



**PRELIMINARY
NOT FOR CONSTRUCTION**



ISSUED BY ENGINEERING DEPT FOR: **PRELIMINARY**
THIS MAP/DOCUMENT IS A TOOL TO ASSIST EMPLOYEES IN THE PERFORMANCE OF THEIR JOBS. YOUR PERSONAL SAFETY IS PROVIDED FOR BY USING SAFETY PRACTICES, PROCEDURES AND EQUIPMENT AS DESCRIBED IN THE SAFETY TRAINING PROGRAMS, MANUALS AND SPARS. INTERNAL INFORMATION; DO NOT COPY OR DISTRIBUTE WITHOUT EXPRESS WRITTEN CONSENT FROM XCEL ENERGY.

HARVEST MILE
 GENERAL ARRANGEMENT
 345/230KV PLAN

HMIL

Xcel Energy HARVEST MILE - ERP EXPANSION - GA SCALE 1"=50'-0" REV 1

REV	DATE	WBS 4	REVISION DESCRIPTION	REV	DATE	WBS 4	REVISION DESCRIPTION	REV	DATE	WBS 4	REVISION DESCRIPTION
0	20210122		PRELIMINARY - HARVEST MILE - 345V ERP	0	20210122		PRELIMINARY - HARVEST MILE - 345V ERP	0	20210122		PRELIMINARY - HARVEST MILE - 345V ERP
1	20210224		PRELIMINARY - UPDATED STATION NAMES	1	20210224		PRELIMINARY - UPDATED STATION NAMES	1	20210224		PRELIMINARY - UPDATED STATION NAMES

095001001801.DWG 2/24/2021 7:40:15 PM